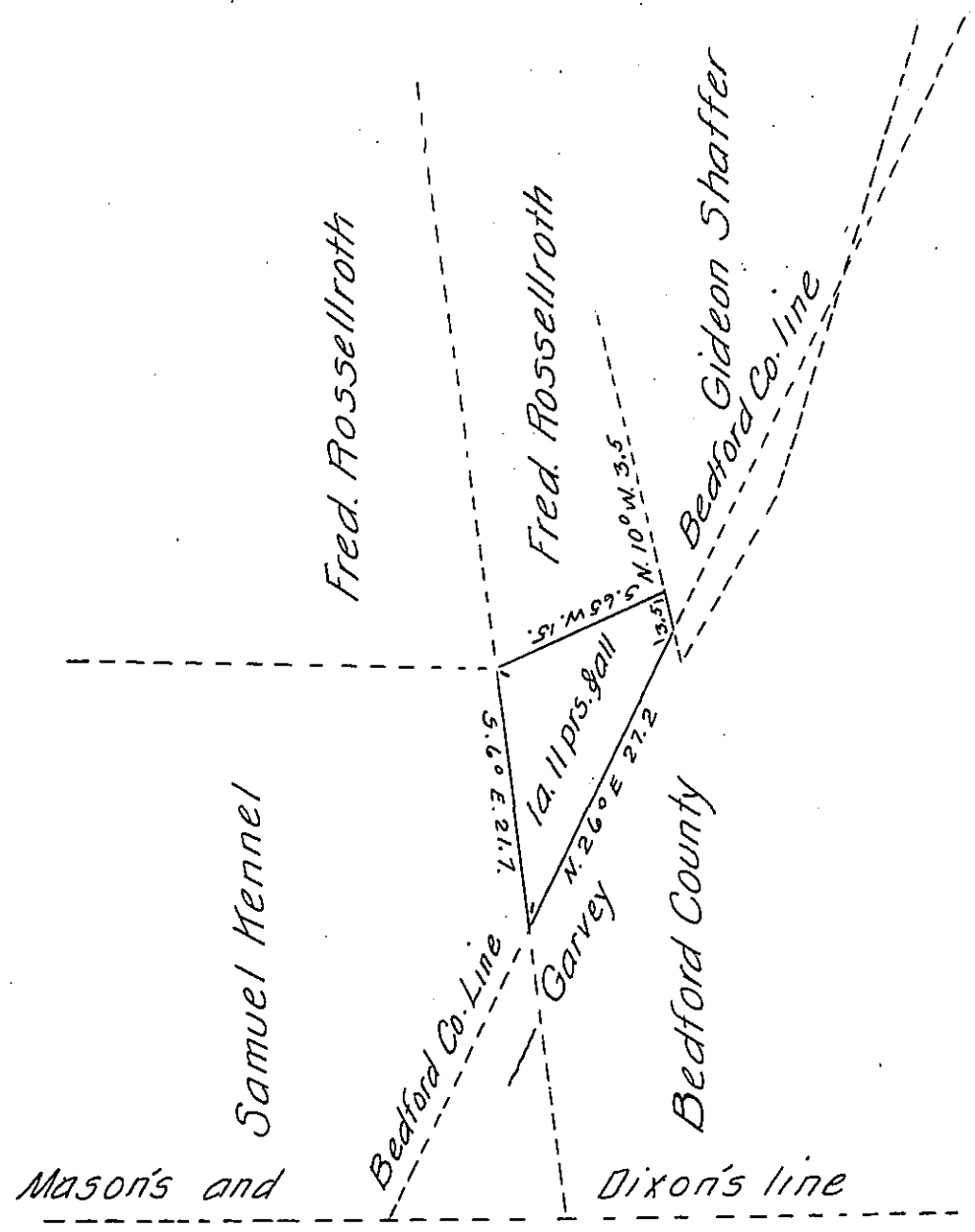


FORM NO 1.



Maryland

Draft of a tract of land, containing 1 Acre 11 perches & allowance of six per cent for roads &c. Situated in Southampton Township Somerset County Penna. Surveyed on the 11th day of May A.D. 1875. in pursuance of a warrant dated the 15th day of March 1875. granted to Jesse Kennel for 10 acres.

To W^m. McCandless }
 Sec. of Internal Affairs }
 Harrisburg Pa }

J. H. Fritz Co. Sur.
 Somerset Penna.

IN TESTIMONY that the above is a copy of the original remaining on file in the Department of Internal Affairs of Pennsylvania, made conformably to an Act of Assembly approved the 16th day of February, 1833, I have hereunto set my Hand and caused the Seal of said Department to be affixed at Harrisburg, this fifth day of February 1908.

Henry Howard
 Secretary of Internal Affairs.